

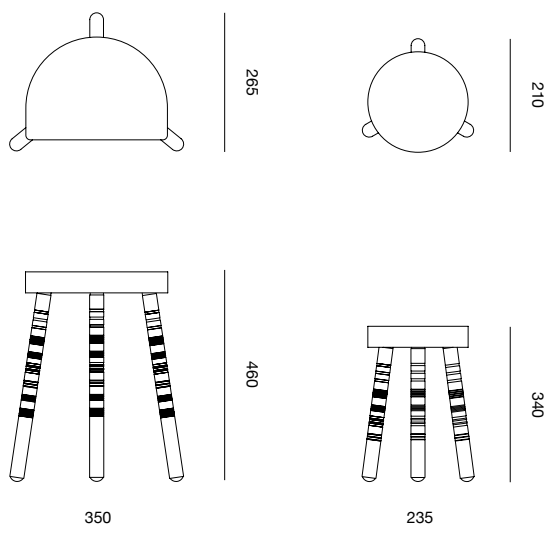
## Ort tables



**PINCH**

# Ort tables

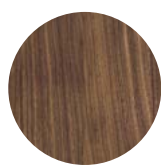
---



The Ort tables are small perches with a neat footprint, designed to be drawn up close to a sofa or armchair. Available in two sizes and a variety of wood finishes.

---

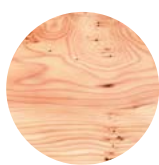
## TOP & LEG TIMBER COMBINATIONS



Black American walnut  
clear oil finish



Ripple sycamore  
white oil finish



Yew  
clear oil finish



Brown oak  
clear oil finish



European oak  
black stain  
clear oil finish



European oak  
black stain  
clear oil finish



European oak  
black stain  
clear oil finish



European oak  
white oil finish

---

## MATERIALS

As described above all solid timber FSC

## DIMENSIONS (mm)

Tall - 350W X 265D X 460H

Low - 235W X 210D X 340H

## DATE OF DESIGN

2021

## WARRANTY

24 months

## PRODUCTION

This piece is made in the UK

## ADDITIONAL INFORMATION

Variations in grain, including knots, scars and other natural markings may occur in a this piece. This is considered part of the material's natural beauty. For information on how to maintain and protect timber and leather, please refer to the PINCH product care guide.



Ort tables  
Brown oak top  
Oak legs



Please note image is indicative only as every piece of timber is individual - grain pattern and colour will vary from piece to piece.

## Brown oak

Brown oak is from an Oak tree where the timber is naturally coloured by the fungus *Fistulina hepatica*, commonly called the beefsteak fungus due to its blood red colour. Often mature trees with a branch which has fallen off will attract the fungus and the colouring starts at the 'wound' and slowly penetrates the tree, so there may be a mix of white and brown in some trees, running to solid brown eventually.

This means some tops can be all brown and others partially brown like the above right picture.

Brown oak is rare to discover and valuable as such.

Oak will get darker with age.



### Ort tables

Yew top

Black stained oak legs

### English yew

A softwood conifer tree but unusually hard, heavy and tight grained.

Knots, and sap wood are typical and its grain can be very figured.

The warm pinky-orange hue will gradually mature over the years to a considerably darker colour more like American cherry or a medium mahogany.



Please note image is indicative only as every piece of timber is individual - grain pattern and colour will vary from piece to piece.



### Ort tables

Black American walnut top  
Black stained oak legs

### Black American walnut

A slow growing deciduous tree native to north America and Canada producing edible nuts.

Black American walnut is prized for its dark brown, purplish colour with a sometimes swirling grain.

Walnut will get lighter with age becoming more honeyed over time.



Please note image is indicative only as every piece of timber is individual - grain pattern and colour will vary from piece to piece.





### Ort tables

Ripple sycamore top  
Black stained oak legs



Please note image is indicative only as every piece of timber is individual - grain pattern and colour will vary from piece to piece.

### Ripple sycamore

Sycamore is a variety of Maple (Acer).

The most prized sycamore is described as rippled which means there is a wave in the grain generally found at the base of the trunk. Rippled sycamore when cut exhibits a stunning three-dimensional figure. The most heavily figured sycamore is sometimes referred to as 'fiddleback' because of its use in the construction of high grade musical instrument cases.

Sycamore becomes darker and more yellow with age, we slow this process down by finishing the timber with a white oil.



